

UNHCR Uganda OPERATIONS UNIT

INTER-AGENCY COORDINATION MEETING

28 February 2020

UNHCR Uganda Operational Update

February 2020
Inter Agency
Coordination
Meeting .



Decongestion Strategy- First Convoy from Nyakabande to Nakivale with 372 refugees

SHOT ON REDMI NOTE 7
MI DUAL CAMERA



**Improving Nutrition for new arrivals at Nyakabande
Supplementary Feeding Program**

SHOT ON REDMI NOTE 7
MI DUAL CAMERA

Agenda

1. Welcome Remarks – UNHCR/OPM/MoLG
2. Situation updates – UNHCR/WFP
3. Update of the OPM/UNHCR Joint Settlement assessment in South West (OPM)
4. Socio-economic data on refugees – (Miriam)
5. Health update on the Nyakabande TC (Julius/Isaac),
6. Update on Monitoring Systems (World Bank)
7. KOBO process (Fred & Charles)
8. AoB



Loading of a convoy at the Matanda old TC

Flashback on previous actions points (Recap)

- Explore innovative solutions for the delivery of food and cash assistance in a way that refugees are served with dignity (minimizing lining, long queuing time, scooping, etc.)
- A joint follow up mission on new arrivals in Zombo to ascertain the findings: 3 missions undertaken, all IDPs have returned to their border communities
- 2020 refugee projection figures:

Flashback on previous actions points (Recap)

- Kyaka is full, new refugee receiving settlements is now Nakivale;
- SoP on relocation of refugee new arrivals is being finalized;
- Status of staff accommodation at Ntoroko: 10 RHUs installed and operational
- Number of partners that are supposed to be reporting through activity info:
- Clarity on whether the NGOs can apply for the CERF funding under the current window:
- Announced availability of Rotary scholarships at Makerere University: Yes, refugees are eligible and the information has been shared with field colleagues for sharing in the settlements.



Ten (10) RHUs have been installed in Ntoroko for staff

Decongestion Strategy | Focusing on Solutions

Kyaka – Family reunification cases from Settlements, Resumption of Plot Demarcation, relocations, improving WASH, malnutrition and disease case management, prepositioning of NFIs, Engaging OPM on the REC sessions

Nakivale-Receiving from TCs & CPs
Ongoing Plot demarcation, relocations to plots, improving WASH, malnutrition and disease case management, prepositioning of NFIs, Engaging OPM on the REC sessions

Relocations to Settlements-
Hiring Private buses in security and dignity

TCs/CP- Nyakabande, Matanda & Ntoroko, Elegu etc- Managing congestion, improved case management of malnutrition, Improved WASH, Ebola screening, Engaging OPM on the REC sessions

Decongestion Strategy

Nyakabande & Matanda TCs

- Use of old and new TCs at Nyakabande, by COB 20/02/20 there were **1331** at new TC and **573** at old TC
- By COB **20/02/20** there were **1038** and **881** refugees ready for relocation at Nyakabande and Matanda TCs respectively.
- Joint UNHCR & OPM mission to SW recommended that Nakivale start receiving refugees from TCs and Kyaka will continue to receive family reunification cases;
- Resumption of plot demarcation and subsequent convoys.

Decongestion Strategy

- First 2 convoys to Nakivale with a total of 806 individuals of 288 HHs has been successful (NEW PAGE);
- By 04 March we plan to relocate 3358 refugees to the Settlements;
- NFIs pre-positioned at warehouses in Settlements;
- Settling-in activities,
- Accelerate the REC process {pending REC cases: Nyakabande: 600 individuals, Matanda: 85 individuals, Nakivale: 1,100 individuals, Ntoroko: 20 individuals};
- In addition to UNHCR 7 buses, a private company has been requested to increase the transport capacity since 2nd February 2020, bringing the capacity to between 800 to 1,000 persons per convoy.

Decongestion Strategy

Rhino and Imvepi

- As of 20/02/2020 a total of 838 (M 471, F 367) individuals in 137 HHs at Elegu Collection Centre, 785 individuals are pending relocation to Rhino while 53 individuals are to be relocated to Imvepi RC;
- Relocations started on Monday 24/02/2020 and to be completed on Friday 28/02/2020;
- Upscaling of health and hygiene education including Ebola Screening at TCs/RCs for new arrivals;

Relocation plan for Elegu Collection Centre

- Monday 24/02/2020, planned relocation number 293 PoC (240 Rhino and 53 Imvepi); Done
- Wednesday 26/02/2020, planned relocation number 240 PoC (Rhino); Done
- Friday 28/02/2020, planned relocation number 240 PoC (Rhino);
- Total to be relocated: 838 (M 471, F 367) individuals in 137 HHs

West Nile



PoCs at Elegu during a boarding process

photo @UNHCR/Adjumani./A. Christine

SOUTH WEST

Rwamwanja: Mahani Reception Center has the capacity of 1,000 PoCs at one given time

Facilities includes:

- Semi-permanent accommodations - 3 blocks can accommodate 100 PoCs per block
- Permanent accommodations - 3 blocks which can accommodate 700 PoCs
- Waiting area -1 that can accommodate 50 PoCs, Permanent kitchen - 16 stoves that use volcanic

SOUTH WEST (RWAMWAJA)

- Counselling room - 1, Store for storage of food, Washing space
- Water tanks – 2 tanks which has a capacity of 5,000 liters per tank
- Health Center Outpost with clinical officer, nurses, Support staff – 2 cleaners
- A police outpost is near the area
- rocks



Major Developments

- Road rehabilitation in **Nakivale** started and is progressing well (Estimated progress – **10%**)



Major Developments

- **OPM/UNHCR** joint mission to Nakivale settlement **reached a consensus:**
- Commencement of relocation of new arrivals from **Kisoro** to **Nakivale** with the first 2 convoys of **806 individuals** in **288 HHs** individuals received on 20/02/2020;
- Preparatory activities:
- Construction of additional temporary shelters in Kabazana;
- Rehabilitation of access road to Nakivale base camp
- Construction of temporary RC in Rubondo (long term plan) to handle the new arrivals and to separate asylum seekers from new arrivals from Kisoro;

Relocation photos Nakivale



South West

Major Developments

- Registration team (OPM & UNHCR) to revise attestations to reflect the change of location (**Nakivale instead of Kyaka II**);
- Alight (Ex ARC) to prepare hot meals for new arrivals on **20/02/20**: communication made with WFP on both hot meals and food rations at plot level;
- OPM confirmed availability of **2,000 plots** ready for settling;
- UNCHR confirmed availability of adequate NFI's at Nakivale level and working with Alight for distribution;

Major Developments

- Nsamizi will work on pipeline extensions and emergency sanitation construction: **materials available on site**;
- All partners have been briefed by commandant and HoFO, including discussions on technicalities with regards to smooth operation of the relocation exercise;
- Kisoro Team has been advised to ensure that **family reunion cases and other protection related cases** continue to be relocated to Kyaka II.

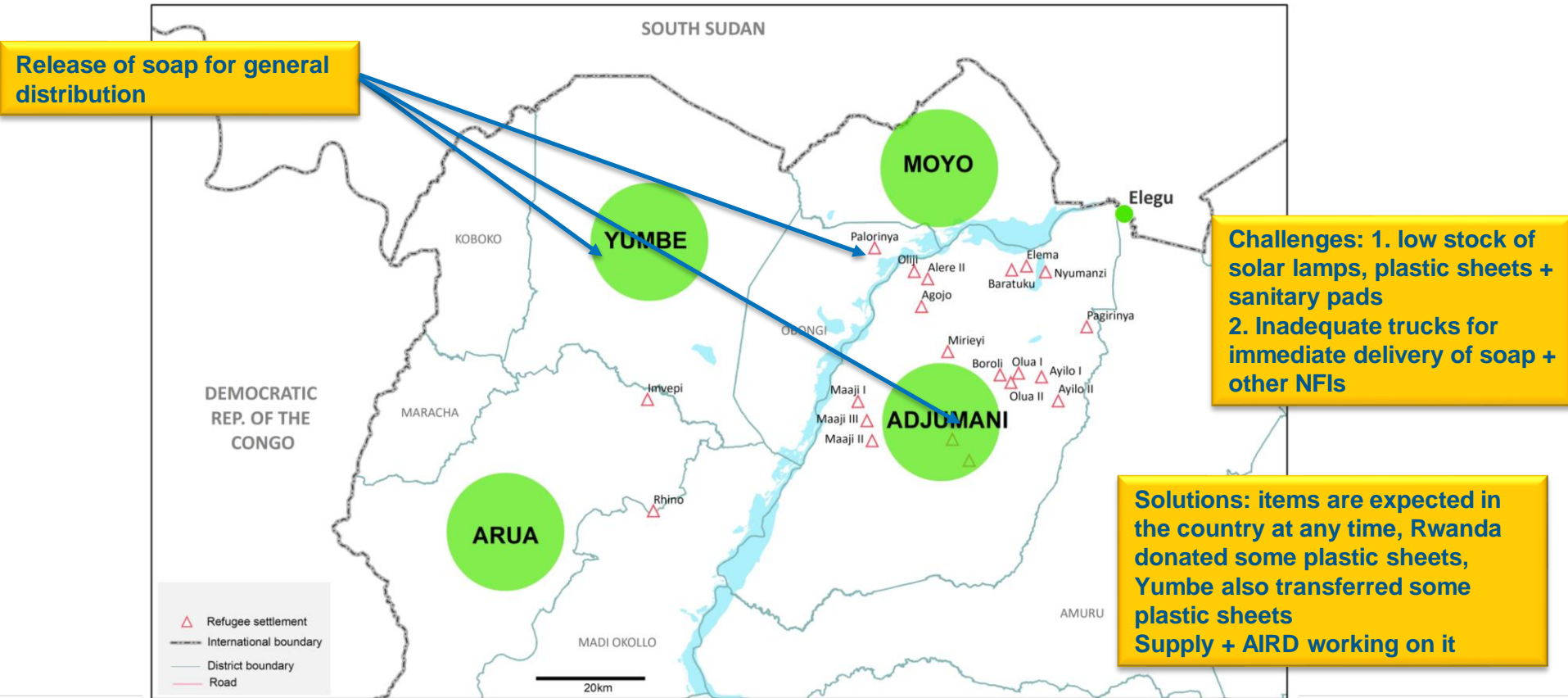
Major Developments

- Preparations for yellow fever vaccination in the selected settlements (i.e. Moyo, Bidibidi, Ivempi, Koboko) are underway (MoH);
- Measles in Nakivale have drastically reduced (Cumulative: 74 cases, 0 deaths, 1 currently admitted, but some cases coming from the Nationals;

Major Developments

- **Measles** Vaccines are available, MoH is assessing the vaccination status of children with the view of expanding coverage **in Nakivale**;
- A Joint Donor Mission to Nyakabande, Nakivale, Rwamwanja and Kyaka II by UK DFID, EU-ECHO and USAID on Feb. 3 – 6, 2020. Recommendations were to streamline relocations by UNHCR and OPM- issue of plot demarcation, frequent REC sessions preferably at RCs where there are better facilities compared to TCs;

West Nile



South Sudan Influx Dashboard – 14th February 2020

SSD situation

Influx

This year	This month
3,649	1,717

Compared to '20 RRP



February daily arrival figures increased

Daily average

Previous month	Current month	Difference	Trend
62	123	97%	↑

South Sudan Situation

- Riek Machar was sworn in on February 22nd as First vice-president of Salva kiir in culmination of the the peace agreement;
- There will be 4 other vice-presidents and a total of 35 ministers;
- Enormous challenges remain at the security and human rights level.

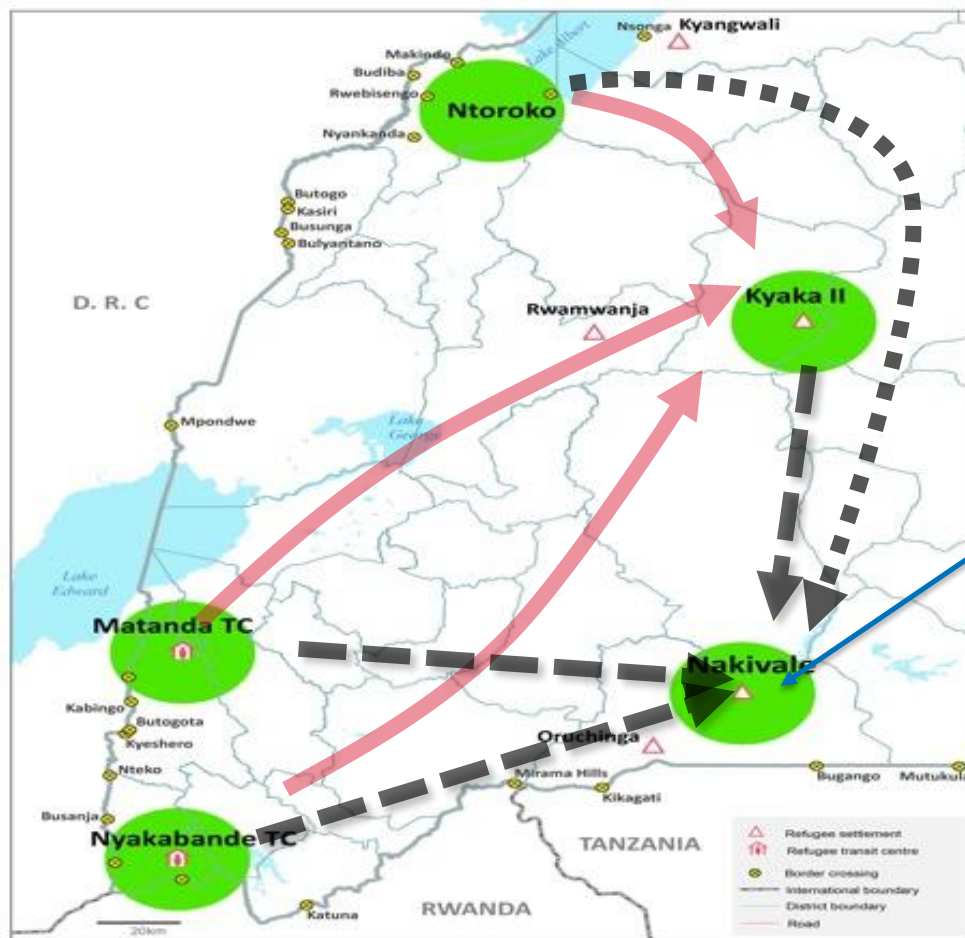
WEST NILE

- Yellow fever has been contained in Moyo;
- Moyo, Bidibidi, Koboko and Imvempi settlements (West Nile) have been included in the yellow fever quantification;

- New refugee family attestations now exists with an expiry period of 3 years unlike the current version that does not have an expiry date;
- The National Pre-Transitional Committee (NPTC) from South Sudan will visit refugee settings in both camp and urban locations in Uganda to conduct awareness raising of the 2018 South Sudan peace agreement.

SOUTH WEST 2020

Only family reunification cases will now be relocated to Kyaka II including other special protection cases



Route	Distance
Ntoroko to Nakivale	320 km
Kyaka II to Nakivale	222 km
Kisoro to Nakivale	264 km
Matanda to Nakivale	227 km
Kisoro to Kyaka	480 km

New settlement for new arrivals. Preparations ongoing

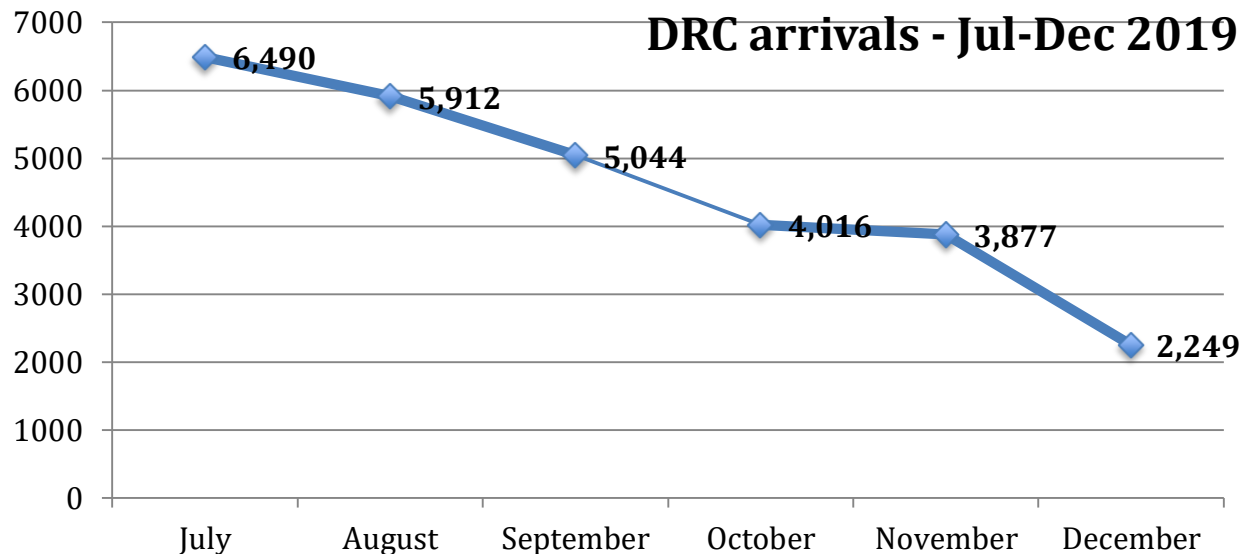
Existing route
Proposed route

DRC Situation

- The socio- political situation in E Congo remains fluid and highly unpredictable. Ongoing military operations by government on rebel positions and general insecurity continues to displace Congolese.

- Daily arrival rate of Congolese through Nyakabande is 80 and Matanda is 18.

- New arrivals are reporting fear of persecution, insecurity, rape as the main reasons for flight.



DRC Influx Dashboard – 14th February 2020

DRC situation

Influx

This year

5,756

This month

1,957

Compared to '20 RRP



Daily average

Previous
month

123

Current
month

140

Difference

14%

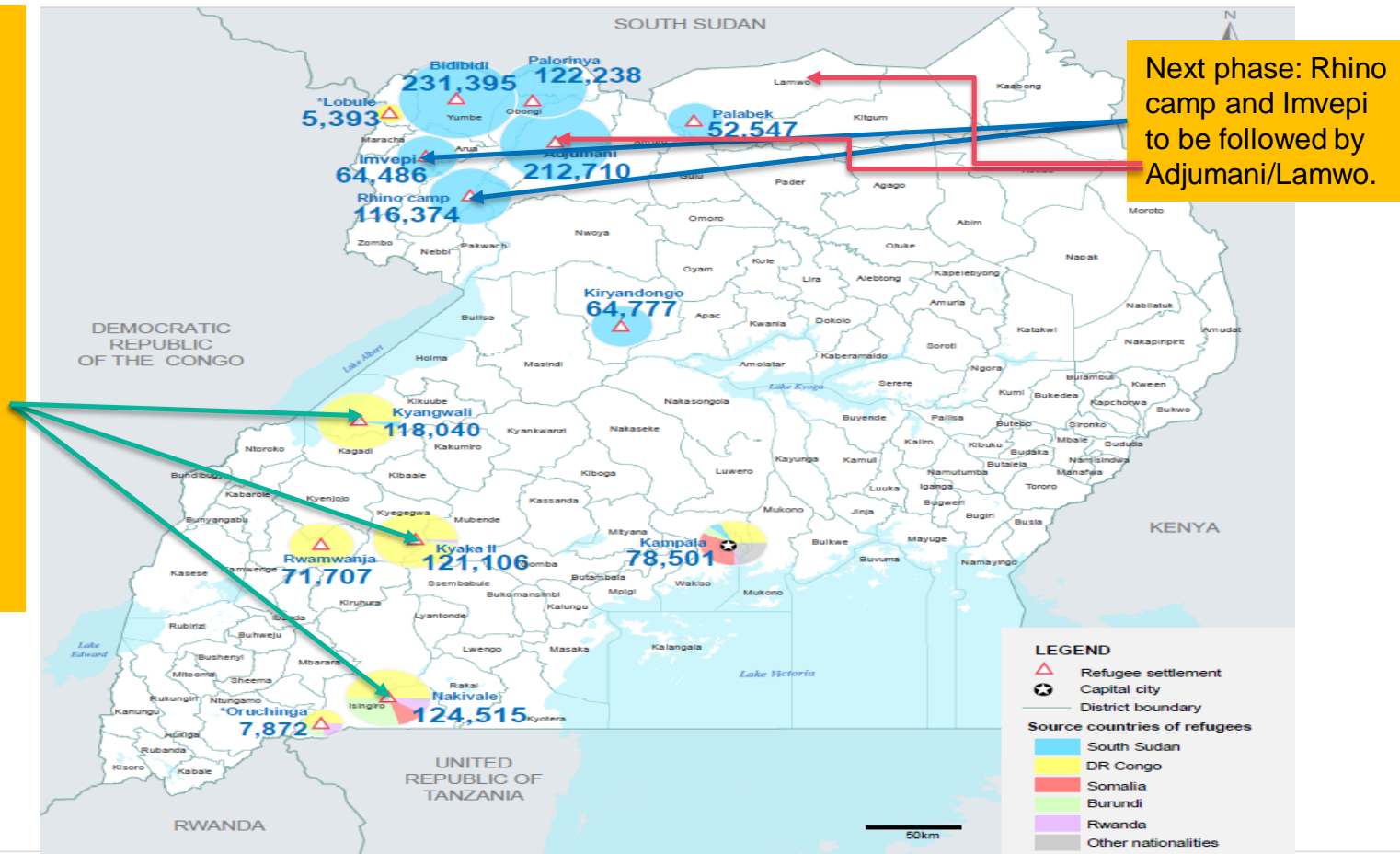
Trend

↑

- February daily arrival figures increased;
- Reasons of flight:
- Congolese pointed inter-tribal conflict among Balendu and Bahema as their major reason for flight.

GDT/KOBO tool

Phase one trainings already conducted in Kyaka II, Nakivale and Kyangwali in conjunction with registration



Next phase: Rhino camp and Imvepi to be followed by Adjumani/Lamwo.

Kyaka II, Nakivale and Kyangwali

Total number of refugees and asylum seekers **1,394,678** as of 31/01/20

UGANDA: SETTLEMENT OVERVIEW / SITE PLANNING RESPONSE MATRIX

Overview of settlements									
#	Sub-offices	Field offices	Field unit	District	Settlements	Long	Lat	Settlement Area (Km2)	Established in
1	Arua	Bidibidi		Yumbe	Bidibidi	31.382941°	3.468909°	234.049	3-Aug-16
2				Arua	Imvepi	31.277188°	3.253371°	56.950	21-Feb-17
3				Arua	Rhino old	31.281919°	3.072177°	47.213	1-Jan-93
4				Arua	Outskirts Rhino (for Dinkas)	31.181965°	3.035588°	2.900	NA
5				Arua	Rhino extension - Omugo	31.178155°	3.181162°	23.400	1-Aug-17
6				Arua	Madi Okollo & Pawor (Bula)	31.226891°	2.705540°	24.815	Not yet
7				Koboko	Lobule - Koloko (Congolese)	31.087438°	3.386512°	N/A	-

#	Sub-offices	Field offices	Field unit	District	Settlements	Long	Lat	Settlement Area (Km2)	Established in
8	Adjumani			Adjumani	Agojo	31.746	3.410861	6.690	1-Jan-16
9				Adjumani	Alere II	31.7472647	3.458017	6.150	12-Jun-90
10				Adjumani	Ayilo I	31.934722	3.296111	4.090	1-Jan-15
11				Adjumani	Ayilo II	31.96233333	3.2566	2.910	6-Jul-14
12				Adjumani	Baratuku	31.883883	3.476381	2.040	1-Jan-91
13				Adjumani	Boroli I/II	31.866389	3.299444	1.030	1-Jan-14
14				Adjumani	Elema	31.909797	3.479245	5.750	1-Jan-92
15				Adjumani	Maaji I	31.63271384	3.254995706	2.666	1-Jan-97
16				Adjumani	Maaji II	31.66274606	3.19758096	2.780	1-Jan-97
17				Adjumani	Maaji III	31.65800769	3.169477511	2.630	1-Jan-97
18				Adjumani	Miriyei	31.780341	3.337763	0.440	1-Jan-94
19				Adjumani	Mungula I	31.78814983	3.192977	4.546	1-Jan-96
20				Adjumani	Mungula II	31.8157116	3.1579196	6.874	1-Jan-96
21				Adjumani	Nyumanzi	31.946944	3.456667	4.900	1-Jan-14
22				Adjumani	Oliji	31.724822	3.470125	6.550	1-Jan-91
23				Adjumani	Olua I	31.887626	3.249910982	0.610	1-Jan-12
24				Adjumani	Olua II	31.884244	3.264945055	0.320	1-Jan-12
26				Adjumani	Pagirinya	32.453368°	3.356758	5.680	1-Jan-16
29		Moyo		Moyo	Palorinya	31.615553	3.478251	37.580	9-Dec-16
30				Moyo	Palorinya (Lama)			4.780	Not yet
31				Moyo	Palorinya (Morobi/Zone 4)			19.400	Not yet
32			Lamwo	Lamwo	Palabek	32.412692	3.364856	50.000	13-Apr-17

#	Sub-offices	Field offices	Field unit	District	Settlements	Long	Lat	Settlement Area (Km2)	Established in
33	Mbarara		Nakivale	Isingiro	Nakivale	30.949444	-0.776389	185.000	13-May-60
34				Isingiro	Oruchinga	30.637274	-0.961159	8.000	14-May-61
35			Kyaka	Kyegegwa	Kyaka II	31.081311	0.357999	81.500	5-Jun-83
36			Rwamwanja	Kamwenge	Rwamwanja	30.630799	0.321722	108.000	17-Apr-64
37	Hoima		Kyangwali	Hoima	Kyangwali	30.812695	1.211136	142.000	1-Jan-60
38			Kiryandongo	Kiryandongo	Kiryandongo	32.0651378	1.89279254	70.000	1-Jan-90
39	Kampala			Wakiso		32.596672	0.334808	0.000	1-Jan-56

Issues of concern

1. Suicide

- 7 cases of suicides (2 complete and 5 attempts) registered in 2020;
- the plan to reinforce the mitigation measures and psychosocial support in phases was initiated;
- One incident of death by snake bite in Zone 1 village 11 in Yumbe

Measures taken:

Issues of concern

2. Corona virus

- The virus continues to spread around the world;
- Development of the National N-Corona virus preparedness and response plan (focus on entry points including refugee settlements);
- Uganda has acquired the capacity to diagnose N-Corona virus and confirmation is being done by the central reference laboratory.

Issues of concern

Measures taken (Corona):

- Two hospitals are ready (1 at the airport and the national referral hospital);
- A UNHCR donated thermo-scanner has been installed at the airport for screening for N-corona virus;

Burundi Influx Dashboard – 14th February 2020

BDI situation

Influx

This year

441

This month

441

Compared to '20 RRP



February daily arrival figures increased

Daily average

Previous month

12

Current month

14

Difference

20%

Trend

↑

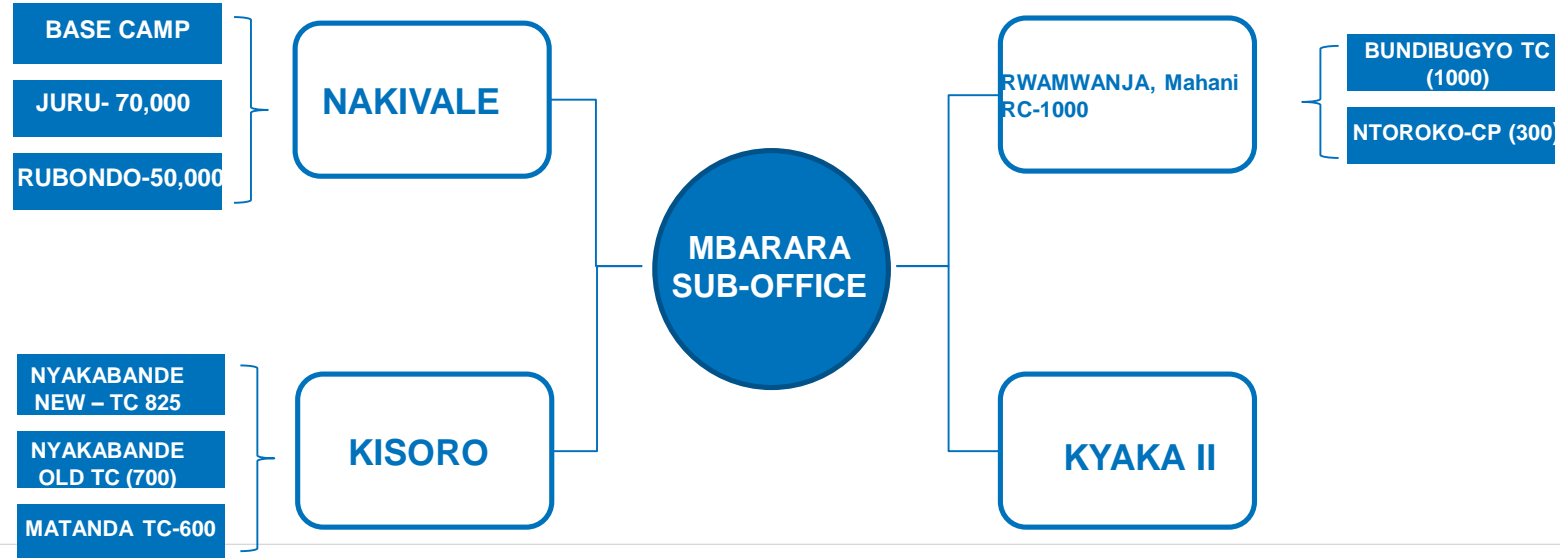
South West

Perspective – moving forward

- Late signing of OPM PPAs affecting REC and plot demarcation- UNHCR & OPM working on concluding the PPA finalisation; REC will begin next week
- Accumulation of Asylum seekers at the TCs- OPM being engaged to start as soon as possible REC;
- UNHCR/OPM have engaged respective DLGs to work on the access roads to settlements- Nakivale and Kyaka- facilitate smooth movement of refugees, NFIs and Food;
- Some new arrivals arriving at TCs with malnutrition- Supplementary Feeding at Nyakabande introduced.

SOUTH WEST SUMMARY

Key Operation



T
H
A
N
K

Y
O
U



Mothers & their children smiling

Supplementary feeding at the Nyakabande TC